

# High-Speed Roll Doors

An intelligent entrance solution for every location

ASSA ABLOY

ASSA ABLOY Entrance Systems

The global leader in door opening solutions



# We open the door to your business

ASSA ABLOY Entrance Systems is the world's leading single-source supplier of reliable, convenient, and energy-efficient entrance solutions for ensuring the safe passage of vehicles, goods, and workers in industrial and warehouse facilities.

We offer you the leading door brands of Besam, Crawford, Albany, and Megadoor, along with a team of experts happy to assist you in the planning, selection, maintenance, and modernization for your doors.

With our doors in place, your business can improve interior work climates, reduce energy losses, control harmful air pollutants, ensure sufficient daylight, and optimize your work spaces for increased productivity.



High-speed roll-up doors have rapid opening and closing speeds, long operating lives, and high safety standards that help you have a more efficient flow of materials, save on energy costs, and realize a greater return on your investment.

Designed for both small and large openings, these roll-up doors operate at higher cycles (>100/hour), use the latest control systems, and incorporate advanced safety systems.

Made for a broad range of applications, Albany doors offer specific solutions for hygienic food and pharmaceuticals manufacturing, machine guarding and protection operations, and specific refrigeration and cold storage areas.

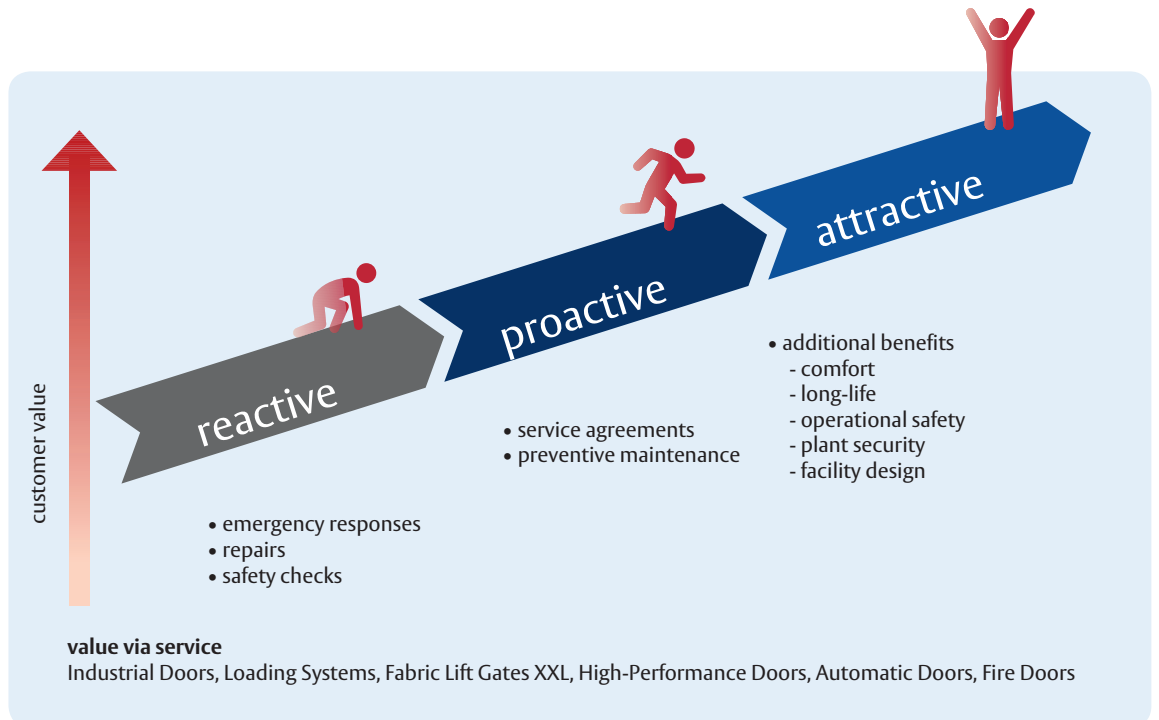
# Expert, high-performance service



ASSA ABLOY Entrance Systems is your global partner for the expert service and maintenance your business needs for keeping your entrance doors operating reliably and safely 24/7.

Our range and depth of know-how and service expertise covers:

- Repair and maintenance (reactive)
- Preventive inspections (proactive)
- Modernization (forward thinking)



# Doors with flexible curtains

W max.: 4000 mm  
H max.: 4000 mm



## Albany RR200

The Albany RR200 high-performance door is designed for interior applications and offers protection from air leaks, dirt dust, and moisture penetration. It provides security and reliability in storage rooms for retail operations, logistic centers, and production plants.

The door has a compact footprint, slim side frames, a zip closure system, and a flexible, automatic curtain which eliminates the affects and costs of work stoppages and minor collisions. Fast and easy to assemble, the Albany RR200 also offers modern drive technology and MCS frequency converter controls for rapid door openings and closings.

W max.: 4000 mm  
H max.: 4200 mm



## Albany RR300

The Albany RR300 high-performance door is designed for universal interior applications in separate work environments needing lower wind loads and moderate temperatures.

Simple, space-saving, and cost-efficient, this modular-based door can meet each customer's specifications across a broad range of industrial applications, such as production areas, material processing systems, and logistics facilities. Options include alternative controls for different speeds, and a choice between a PVC curtain with colored reinforcement stripes for high light penetration and safety, or a robust fabric curtain for tough environments.

## Albany RR300 Plus

The Albany RR300 Plus door is a compact and light, high-performance door made from aluminum or stainless steel columns. The door can be used for all types of interior applications, including retail and wholesale facilities, and especially for warehouses where the door is needed to separate climate zones.

Thanks to its smooth, easy-to-clean surfaces, the door is ideal for hygienic areas. In the sealed option, the door is ideal for clean rooms up to ISO Class 7 and where there is a need for minimizing pressure losses.

The door offers manual self-opening with a standard counterbalance, and also automatic self-opening with built-in features for handling power failures along with special add-ons for use in escape routes where doors must open automatically in the event of danger.



W max.: 5000 mm  
4000 mm (F+R)  
H max.: 5000 mm  
4000 mm (F+R)

## Albany RR300 Clean

The Albany RR300 Clean door is custom built to prevent unnecessary air infiltration and to minimize the spread of airborne particles in clean room applications found in pharmaceutical, electronics and semiconductors, and research and aerospace industries.

The door provides high air-tightness for minimizing pressure drops when the door is closed, and has smooth, stainless steel (V2A) surfaces that are easy to clean.

Confirmed by the Fraunhofer Institute for suitability in clean rooms, the Albany RR300 complies with international standards, DIN EN ISO 14644-T, and is certified in compliance tests for ISO Class 5 and GMP Class C.



W max.: 3500 mm  
H max.: 3500 mm



**Fraunhofer**  
**TESTED<sup>®</sup>**  
**DEVICE**  
Albany Door Systems  
RapidRoll Cleanroom  
Report No. AL 1003-514

**SWISS/CCS**

**vip**  
**3000**

# Doors with flexible curtains

W max.: 4000 mm  
H max.: 4000 mm



## Albany RR300 Food

The Albany RR300 Food door is designed for hygienic production in food processing areas.

Made from stainless steel (V2A), the door, with its openable side frame, is easy to clean and disinfect, and able to withstand continuous use of cleaning agents. A gutter on the bottom profile prevents water from the curtain to drip into the door opening. A version of the door that has a durable PVC curtain tested to FDA specifications, is also available upon request.

W max.: 2500 mm  
H max.: 3000 mm



## Albany RR300 Retail

The Albany RR300 Retail high-performance door is designed specifically for supermarket and warehouse applications.

Used to separate warehouse operations from sales offices, the door acts as a visual barrier, offering protection from theft and access by unauthorized personnel. The door also has fast opening and closing speeds which streamline the overall material flow and work processes, and provide easy access to workers with or without manual pallet jacks. Easy to learn and use, the door complies with high safety standards for preventing injuries from collisions for both customers and supermarket employees.

W max.: 4000 mm  
H max.: 4200 mm



## Albany RR355

The Albany RR355 door combines a high level of technology standards with modern industrial design for all-purpose, interior and exterior use especially for saving energy in room and climate separations, and preventing drafts from driverless transport systems used in outdoor areas. The door's slim side sections are made from anodized aluminum profiles, and help support its quick opening and closing operations which minimize energy and heat losses. The Albany RR355's features include: the curtain tensioning system and wind protection features which provide good wind resistance; the self-repairing breakaway capability for collisions; and the pre-running safety light barrier for contactless protection of goods and personnel.

## Albany RR500

The all-purpose Albany RR500 door is a reliable, tightly-sealed door for both interior and exterior applications. The door improves energy efficiency and optimizes energy savings over the long term.

Ideal for customers who need to close huge openings (up to 8000 x 5500 mm) in industry and logistics, the door provides durability, leak-tightness, and collision-proof operations with minimum maintenance.

In the standard version, the RR500 door is equipped with a curtain made from clear PVC with vertical reinforcement stripes. A curtain made with double layers of NomaTex fabric (two layers of fabric and PVC) is also available if you need more curtain tensility, durability, and dimensional stability for greater high wind and weather resistance.



W max.: 8000 mm  
H max.: 5500 mm



## Albany RR392

Providing both affordability and performance, the Albany RR392 door has basic, rugged features which you can configure to your requirements.

The side frames are made from a galvanized steel profile. A curtain tension system is standard; knock-out mechanisms are optional.

Designed for large openings, the door's safety features include an electric safety contact strip and a stationary photocell.



W max.: 6000 mm  
H max.: 6000 mm

# Doors with rigid curtains

W max.: 8000 mm  
H max.: 6000 mm



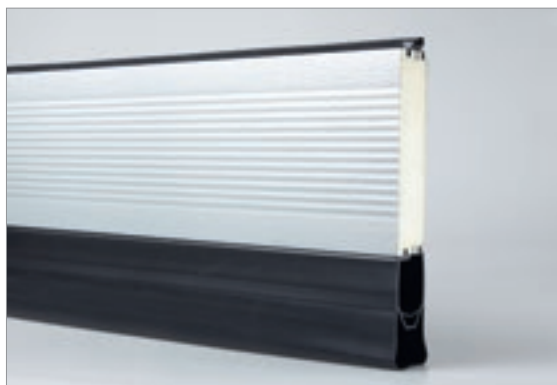
## Albany RR3000 series

The AlbanyRR3000 series combines the highest levels of function and design in entrance systems that provide excellent wind load resistance, minimized collision damage, and low maintenance. The series includes the Albany RR3000, Albany RR3000 Vision, Albany RR3000 R, and Albany RR3000 ISO models, each of which offers a wide range of features to fit your exact specifications and requirements. All versions can easily cope with 2 – 4, EN 12424 wind loads.

Feature rich, all RR3000 doors have aluminum slats that are rolled up contactless on winding discs and free from using wear-susceptible guide rolls on the slats. The slats are either connected to each other hinge-free using laterally-positioned, flexible high-performance ties. This results in no wear, low maintenance, and minimized secondary damage from collisions, thanks to the swift replacement of individual slats. Wear-sensitive guide rollers and hinges are components of the past.

Features and options available:

- Contact-less, pre-running photocells, along with a stationary photocell on the bottom edge are standard for all models; with the Albany RR3000 ISO a door line photocell is provided. Colourful options for the aluminum slats, side frame, and top roll cover in RAL colours provide cost-effective design opportunities.
- The door curtain of the Albany RR3000, Albany RR3000R, and Albany RR3000XL models is made from anodized, double-walled aluminum lamellas. Optional windows and perforated sheet slats are available.
- The Albany RR3000 ISO door is equipped with highly thermally-insulated sandwich lamellas consisting of foam (thickness 50 mm) covered by metal sheet trays in silver (RAL 9006). The k value (heat transfer coefficient) for this curtain is 0.9 W/m<sup>2</sup>K and 1.5 W/m<sup>2</sup>K for a complete door (example: 4 x 4 m). Optional lumellas with shockproof polycarbonate panels can also be integrated into the door blade for gaining a transparency of up to 67%.
- The door blade of the Albany RR3000 Vision offers the highest degree of transparency. Equipped with shockproof polycarbonate panels, it provides a gain in transparency of 70%.
- For extremely large openings, there is the Albany RR3000 XXL door, and for confined spaces, there is the Albany RR3000 R door.



Thermally insulated sandwich lamellas Type RR3000 ISO





The energy-efficient one – Albany RR3000 ISO



Albany RR3000 ISO with windows



The transparent one – Albany RR3000 Vision



The space-saver – Albany RR3000 R



The big one – Albany RR3000 XXL

# Doors for process applications

W max.: 4000 mm  
H max.: 3500 mm



## Albany RP300

Machine guarding doors protect people and processes in highly-automated production areas. The Albany RP300 is a machine guarding door with narrow, aluminum side frames, various flexible curtain designs and colours. The extra-tough plastic guide elements hold the curtain firmly in the guide rails, even if pressure is exerted by a person or equipment. The Albany RP300 syncs with short cycle times, and can be installed in machines, production lines, and railing systems which are close to the machine.

W max.: 3500 mm  
H max.: 3000 mm



## Albany RP2000

With its sturdy and rigid curtain of aluminum slats, the Albany RP2000 enables increased production when the curtain is also being pressed in. Specifically developed for use in robotic and laser welding operations, the door allows short cycle times for openings and closings in the automation process, and is also suitable for continuous operation. The side frames are self-supporting and made from galvanized steel profiles. Options include designs that match different factory standards, and a laser protection curtain.

W max.: 5000 mm  
H max.: 5000 mm



## Albany RR3000

The Albany RR3000 is a machine guarding door for laser systems and automatic welding systems which produce a high volume of weld sparks and spatter. The curtain has overlapping, double-walled slats which ensure the laser beams are controlled. The door has been tested in accordance with DIN EN 60825-5, and is available with various factory standards.

# Door solutions for specific needs

## Albany RapidFalt® SF

The sturdy-steel Albany RapidFalt SF folding door is designed for high-volume, external exits. By positioning the folding doors before or after the opening, the entire opening width and height are available for smooth ingress and egress.



W max.: 6000 mm  
H max.: 6000 mm

## Albany RapidRoll® F

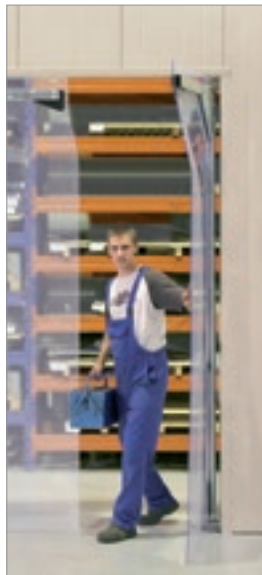
The Albany RapidRoll F metal roller shutter door is ideal for tall and wide external exits in industrial and warehouse buildings; it's frequently used in conjunction with a high-speed roller door. The door is available with various manual and electric motors.



W max.: 12000 mm  
H max.: 8000 mm

## Albany RapidNorm®

Albany RapidNorm swinging doors offer a high return in convenience and long use for a minimal investment. The doors are typically used for internal personnel and forklift traffic. A medium-heavy version is available for normal demands, and a heavy-industrial version is available for high demands.



RapidNorm®  
W max.: 5250 mm  
H max.: 5250 mm

RapidStore®  
W max.: depends on  
the customer's  
requirements

H max.: 6000 mm

## Albany RapidStore®

Albany RapidStore strip curtains can be used cost-effectively for closing large openings in a variety of office and work areas. The strip thickness and the overlap provide segmented interior climates, traffic lanes, work areas, and storage spaces.

ASSA ABLOY Entrance Systems is a leading supplier of entrance automation solutions for efficient flow of goods and people. With our globally recognized product brands Besam, Crawford, Albany and Megadoor, we offer products and services dedicated to satisfying end-user needs for safe, secure, convenient and sustainable operations.

ASSA ABLOY Entrance Systems is a division within ASSA ABLOY.

**ASSA ABLOY**

[assaabloyentrance.com](http://assaabloyentrance.com)



ASSA ABLOY Entrance Systems

[info.aaes@assaabloy.com](mailto:info.aaes@assaabloy.com)  
[assaabloyentrance.com](http://assaabloyentrance.com)

Follow us:



Please enter ASSA ABLOY Entrance in the channel's search field.